



Analytics Institute
of Australia



INTERNATIONAL STUDENT **HANDBOOK**

analyticsinstitute.edu.au



ABN: 18 640 236 380 | CRICOS CODE: 04059D | TEQSA PROVIDER NUMBER PRV: 14346

EVERYTHING YOU
NEED TO KNOW
ABOUT

STUDYING WITH US

For more information contact
marketing@analyticsinstitute.edu.au





CONTENTS

04	Welcome to AIA
05	Pre-arrival Briefing
06	Policies that affect you
07	Being a student
08	Important Information
09	Let's get you started
10	Student services
11	Staying safe and healthy
14	Getting around
15	Entertainment & Activities
17	Exploring
20	Useful Contacts





WELCOME TO AIA



FOREWORD FROM THE AIA FOUNDER – **MR. PANKAJ GOEL**

Establishing the Analytics Institute of Australia has been a long held dream for me. Analytics is the pulse of future private and public sector organisations. I am pleased to make a long-term investment in a boutique higher education provider which operates at the forefront of new disciplines that will change the world and people's lives.

With advisers, governance and staff of the highest quality, we are creating something that is unique and lasting.

WELCOME FROM THE CHAIR OF THE INDUSTRY ADVISORY BOARD – **PROFESSOR PHIL BOLTON**

As organisations grapple with the exponential growth of data, and the possibilities this represents, they will need access to the best analytics skills possible to make better and more informed business decisions.

I'm proud to be part of this Institute which aims to arm some of the best Analytics and Transformation talent in the country with the necessary skills to navigate this fast paced data and analytics world.



MEET OUR DIRECTORS



**Professor
Andrew Flitman**

Chair of the Board of
Directors



**Emeritus Professor
Gary Smith**

Director/ Interim Chair of the
Academic Board



Mr. Pankaj Goel

Founder and Director, Secretary



Dr. Dr. Kamlesh Sharma

Director



PRE-ARRIVAL BRIEFING

Before you leave home, there are a number of important arrangements you need to make and things you need to plan for and understand.

DOCUMENTATION

Ensure you bring translated copies (where possible) of the following documents with you:

- Valid passport with valid current student visa that is granted based on the Confirmation of Enrolment (CoE) of AIA's program that you are studying;
- Travel documents (itinerary, tickets, travel insurance) and a list of goods you are bringing to Australia for yourself, as well as for Australian Border Protection
- All documents for admission to your course including Letter of Offer (LOF), student agreement, Confirmation of Enrolment (CoE) sent to you by AIA and receipts of payments you have made;
- All original/certified copies of your academic transcripts used for admission to your course (as they may be requested);
- Overseas Student Health Cover (OSHC) receipt of payment
- Other personal identification documents, for example driver's license, ID card, etc. medical records or prescriptions (if necessary);
- The same documents for any family members travelling with you, including student reports for any school age children.

HEALTH INSURANCE AND MEDICATION

- Ensure your Overseas Student Health Cover (OSHC) is arranged, as all international students are required by the Australian Government to take out health cover. The OSHC provides international students with free public hospital care for non-elective treatment and an 85% rebate of the standard doctor's fees. Read more [here](#)
- If you need medication for a health condition while staying in Australia, bring a letter from your doctor explaining what your medications are and why you take them, and information about your medical history. If you have an ongoing or chronic health condition, ask your doctor for a letter of referral to a health practitioner in Australia.

COST OF LIVING

Knowing the cost of living in Australia is an important part of your preparation. The Department of Home Affairs (DHA) advises that a single international student requires approximately AU\$29,710 per year for living costs. These expenses are in addition to tuition and study fees, and include things like your accommodation, food, textbooks, transport and other costs that will crop up from time to time. Information about approximate costs can be found in more detail through the www.studyinaustralia.gov.au website. Cost of living varies according to your lifestyle and the location you choose to live. Accommodation is generally more expensive in the CBD than suburban areas of Melbourne. Another helpful resource, which provides updated living costs in Melbourne as well as compares with these costs in your home countries/cities can be found here: <https://www.expatistan.com/cost-of-living/melbourne>

WORK PERMISSION AND PAYING TAX

All student visa holders receive automatic work rights which allow students to work during their time in Australia. Remember that your primary focus in Australia is to study to gain a qualification and part-time work must not interfere with this. From 1 July 2023, work restrictions for student visa holders will be reintroduced and capped at the increased rate of 48 hours per fortnight. This ensures that student visa holders are able to focus on obtaining a quality Australian education and qualification, while remaining able to support themselves financially, gain valuable work experience, and contribute to Australia's workforce needs. Read more [here](#).

When working in Australia you pay tax on your earnings at the same rate as other residents and are entitled to the benefits of the Australian tax system. Find more about paying tax in Australia [here](#).

FAMILY VISAS

If you are an international student with a visa to study in Australia, family members can accompany you if your study lasts for at least one year and you can support them. You should also check to see if you are eligible according to the conditions set out on the [Australian Government immigration website](#). 'Family members' generally means your husband or wife and dependent children


IMPORTANT POLICIES

It is necessary to be aware of AIA policies that affect you once your student visa is granted. Therefore, make sure you are well-informed before arrival. Please go to the next page and read these policies thoroughly.





POLICIES THAT AFFECT YOU



Like any other higher education provider, AIA has a range of policies and procedures in place that are designed to ensure our services operate smoothly and that we maintain a high level of student satisfaction.

TUITION FEE AND REFUND POLICY

Tuition fees are payable prior to the commencement of each term. Your tuition fees are non-refundable and non-transferable. Only in circumstances deemed 'compassionate and compelling' could we consider issuing a refund. Please refer to your Acceptance Agreement for our policy on refunds.

DEFERRAL / SUSPENSION OF COURSE AND LEAVE OF ABSENCE

If you intend to be absent from class for an extended period and do not get permission first, your CoE may be cancelled without notice. Please follow the [Course Intermission \(Leave of Absence\) Policy](#), [Deferral Policy](#) and [Procedures](#) which can be found on [AIA website](#). You also can contact AIA's student services team who will assist you and forward your request to relevant departments for further processing. We will make a decision and send you the results accordingly.

COURSE CHANGES AND TRANSFER

In accordance with the **ESOS Act of 2000** and the National Code, you are required to complete the first 6 months of your principal program (usually the final qualification in your package) before you can transfer to another provider. If you want to change your course before completing 6 months of your principal course, you will need to apply for a release. Please contact International Services to discuss further.

COMPLAINTS AND GRIEVANCE PROCESS

All students have the right to an internal and external appeals process for any decision made by AIA with regards to their education, including decisions to terminate a student's enrolment. You can access the [Student Grievance and Resolution Policy and Procedures](#) on our website. AIA takes all feedback and student complaints very seriously.

PLAGIARISM AND REFERENCING

All commencing students are required to complete an online Academic Integrity Module (AIM) which prepares you for academic writing. Module (AIM) which prepares you for academic writing. You will be enrolled in the AIM automatically at the start of your first trimester of study and you must complete it before you can enrol in your second trimester.

Assignments and other forms of *assignment* **MUST** be your individual and original work. Copying directly from your research sources or another student's work, including re-worded or paraphrased material, without acknowledgement is plagiarism. Plagiarised work is a breach of the Institute's [Academic Integrity Policy and Protocols](#) and will not be accepted and will result in disciplinary action. A referencing guide providing information on how to acknowledge sources and use correct referencing techniques can be found in the Referencing Guide.

CODE OF STUDENT BEHAVIOUR

Students are expected to conduct themselves appropriately at all times. AIA does not tolerate bullying, cheating, plagiarism, disrespectful and rude behaviour or anything else which breaches this Code. Students found to be in breach of this Code will face disciplinary procedures. In some circumstances, international students may have their enrolment suspended or cancelled as a result of a breach and the Department of Home Affairs will be notified once your COE is cancelled. View the [Student Code of Conduct Policy here](#).

COPYRIGHT

AIA students are covered by The Copyright Act (1968) (Commonwealth of Australia). Generally, for paper-topaper copies (for example using a photocopier) for academic research purposes you may copy 10 percent or one chapter of a book, or one article from an edition of a journal. However, some other publications, such as software manuals are not covered by this arrangement. Copyright also exists with web page content and software on AIA's computers must not be copied under any circumstance. For more information, visit the copyright portal.

PRIVACY

AIA is bound by and aims to comply with the [Privacy and Data Protection Act 2014 \(Vic\)](#), the [Health Records Act 2001 \(Vic\)](#) and the [Privacy Act 1988 \(Cth\)](#) ([Privacy Laws](#)). Accordingly, the institute has implemented practices and procedures to ensure compliance with those Privacy Laws. We respect the rights of individuals (our employees, contractors, business partners and students) to security, privacy and service and we wish them to have confidence that the personal and health information they supply to AIA will be stored and used appropriately.

POLICY

All of our [Policies and Procedures](#) can be found on the AIA website. You should take the time to read and familiarise yourself with our policies and procedures.





As a new student, it's definitely an exciting time for you to start a brand new chapter in your life. We are here to help you get the most out of your student experience and help you settle in with minimal disruption. This guide will help you adjust to living in Australia. Lots of important information has been compiled in this guide, including useful contacts and an entertainment guide. Please take some time to read through this information as we believe it will be very useful for you in the coming weeks.

EXPECTATIONS OF STUDENTS

AIA operates as an adult learning environment, which encourages and supports the participation of people from diverse backgrounds. Learning is meant to be enjoyable and our aim is for each of you to have an equal opportunity to learn in a supportive environment. Everyone at AIA has the right to a safe and happy learning experience.

STUDENT SERVICES - OUR COMMITMENT TO YOU

The Student Admission team is committed to provide assistance with orientation, organising social events and answering your questions.

In addition to the Academic support team, the admission team attends solely to the welfare and needs of international students. Our admission coordinator is available to catch up with international students at the CBD campus every week and you can request appointments at your convenience time via emails or phone calls.

Student Services Contacts

General Enquiries:

Phone: (+61) 405 762 772

Email: marketing@analyticsinstitute.edu.au

Student Services:

Email: studentservices@analyticsinstitute.edu.au

Academic Affairs:

Email: academics@analyticsinstitute.edu.au

STUDENT SERVICES - OUR COMMITMENT TO YOU

A comprehensive orientation program is delivered to international students during the week prior to the beginning of the semester. Attendance is compulsory for all international students commencing their formal course at the Institute. The program covers aspects of living and studying in Australia.

BEING A STUDENT



Why attend Orientation?

- Enrol into your course & Collect your welcome pack
- Meet other new international students
- Learn about AIA and what to expect as an international student living in a new city.
- Participate in Orientation activities and enjoy a free lunch
- Learn more about what to expect from your course

Sessions at orientation include:

- Introduction to life as an International student studying in Melbourne.
- Student visa requirements and compliance
- Student Support services available at AIA
- Safety (including fire safety, personal safety, policing and water safety)
- AIA student life & Get to know Melbourne orientation activities
- How to be successful in your course

What to bring to Orientation?

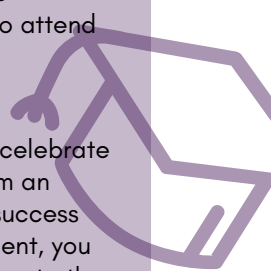
- Your passport
- Your USI (Unique Student Identifier)
- Your Laptop
- Your eCoE

What is USI and How to Create USI?

A Unique Student Identifier (USI) is a reference number made up of numbers and letters, unique to each student. A USI is required by the Australian Government and must be obtained by all students studying in Australia. To create a USI [click here](#) and follow the instruction steps. After completing setting up your USI reference, you must make a note of your USI and include these when completing your RSVP to Orientation. You will receive a registration to attend orientation closer to the day.

GRADUATION

Student graduation ceremonies are held to celebrate our students' achievements, and to give them an opportunity to share their experiences and success with their friends and families. As a AIA student, you will receive an email with further details closer to the day of your graduation ceremony.





If you are studying in Australia on a student visa, there are some conditions you must observe in order to maintain your visa status.

ATTENDANCE AND ACADEMIC PROGRESS

As part of student visa requirements under the Department of Home Affairs regulations, you are expected to attend classes and to meet all course requirements including completing assignments on time. You can also be reported for failing to make satisfactory academic progress.

If you are absent through illness, accident or other extenuating circumstance, it is your responsibility to provide AIA with a legitimate medical certificate or other appropriate document or evidence to cover the period of your absence. It is also your responsibility to catch up on any work missed due to the absence. A request for an extension in assessment due dates will be considered on written communication with your lecturer-in-charge, supported by the required evidence. Satisfactory academic progress is defined as passing a minimum of 50% of all units enrolled in a semester. If your progress is not satisfactory, you will be issued with a written warning, followed by an Intervention Strategy. Failure to comply with your Intervention Strategy may result in the cancellation of your enrolment and you will be reported to the Department of Home Affairs. Students are also expected to maintain their attendance at no less than 80% of all classes enrolled in a semester. Attendance is monitored at every class. If you are not on time or if you leave class early, this will have an effect on your attendance.

UPDATING CONTACT DETAILS

As an international student you have an obligation to notify the student services team within 7 days of any changes of address while enrolled in your course. This is a Department of Home Affairs requirement and condition of your student visa.

ESOS FRAMEWORK

The Australian Government wants overseas students in Australia to have a safe, enjoyable and rewarding experience. Australia's laws promote quality education and consumer protection for overseas students. These laws are known as the ESOS framework and they include the Education Services for Overseas Students (ESOS) Act 2018 and the National Code.

You can find a link to the ESOS Framework [here](#)

IMPORTANT INFORMATION

ACCOMMODATION ARRANGEMENT

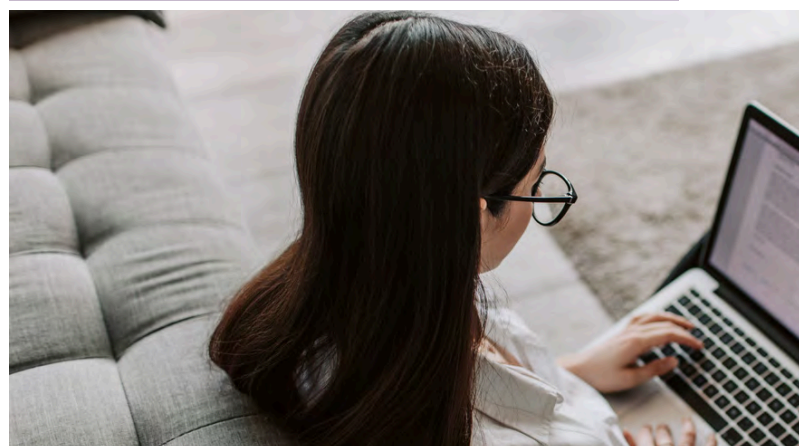
There are websites that help you find various accommodation options:

- **Austay** – Sharing Living Arrangements in fully furnished properties: www.austay.com
- **UniLodge** – Individual and shared student accommodation: www.unilodge.com.au
- **Urban Nest** – Accommodation specifically designed and built for students: www.urbannest.com.au
- **Flatmate Finder** – An online network to independently find share accommodation in a unit or house: www.flatmates.com.au
- **Australian Homestay Network** – A cultural exchange between a local family and a visiting International Student who comes to live as a guest in their home while they are studying: www.homestaynetwork.org
- **Tenancy Advice and Advocacy Services** – For information about the standard of housing you can expect in Australia and your rights and responsibilities as a tenant: www.tenants.org.au

KNOW YOUR RIGHTS IN AUSTRALIA

In Australia, there are many laws to protect you and keep you safe that may be different than in your own country, including:

- Rights as a consumer: Whether you are buying a car or entering into a mobile phone contract, you have rights. Read up on them here: acc.gov.au/consumers/consumer-rights-guarantees
- If you plan to work in Australia, you have rights relating to minimum wages, work conditions and your treatment at work. Become familiar with your working rights here: fairwork.gov.au
- If you rent a property in Australia, you have rights and responsibilities. Find out about them here: tenants.org.au/resources/all
- You have the right to feel safe at all times in Australia. Learn the Australian emergency number. Call 000 for police, fire brigade or ambulance.





LET'S GET YOU STARTED

This section is developed for you to get off to the best start possible.

STUDENT IDENTIFICATION (ID) CARD

You will receive your student ID Card on the day of your Orientation. Your name, photo and student number is printed on your student ID card and it's your primary source of identification during your time with us. Your student ID card is used for various purposes including:

- Attendance at exams
- To borrow workstations
- At Work Integrated Learning (WIL) and
- At Graduation

Remember to take proof of ID, this could be your passport or driver's license. You are required to carry your student ID card at all times whilst on campus and present it upon request by an AIA staff member

STUDENT PORTAL AND EMAIL ACCOUNT

Student Portal

The student portal is an online resource and one-stop shop for all your needs. It's your gateway to regular updates on what's happening on campus, important support resources and assessment results. From the student portal you can access and navigate your way through to:

- View and update your personal information including your address and course complete date
- View your current enrolment details and academic history
- Enrol in your units
- View your timetable
- Access your Statement of Account/Invoice
- Change your AIA password for LMS and student portal

To access the student portal, visit analyticsinstitute.edu.au/student-portal/ or Click on the Current Students link dropped down from the Students tab on top of the homepage. You will find the Student Portal link.

Accessing your Student Email

AIA Microsoft 365 suite provides students with access to various applications / softwares, which is required during the course of study.



As an AIA student, you will receive your AIA student email address. This is the address that AIA will use to contact you, and you need to use this account when emailing AIA. You are encouraged to check your AIA email frequently to keep updated on important and useful information during your study in Australia

Logging onto your email for the first time:

1. Visit office.com
2. Type in your username - your student ID email address
3. Type in your password - use the password that was issued to you
4. Click on the login button

CANVAS (LMS)

Canvas is our online learning management system at AIA. It provides access to learning resources and facilitates communication between the Unit Convenors, Course Convenors and the students within the Unit. Using this learning management system, you can:

- Check your unit outline for lecture topics and assignment details
- Access recommended readings for your unit
- Upload assignments for assessment
- View your marks and feedback
- View and post updates and news relevant to your units

Your Canvas account is created automatically after you enrol.

To log on to Canvas, start at the 'Current Students' tab of AIA's website: analyticsinstitute.edu.au, click on to Student Portal where you will find the Login to Canvas.





STUDENT SERVICES

As your primary focus in Australia is to study to gain a qualification, AIA has dedicated relevant support staff who are willing to help regarding your study matters or anything else that you may need assistance with!

There are also additional student support services, including a free and confidential counselling service, learning and disability support service, student welfare service, employment service and study skills assistance.

LEARNING SUPPORT AND COUNSELLING

AIA's excellent academic support team can help you with general study skills. The learning support staff are available at campus or by appointment for virtual meetings.

Our student services team provides professional support and guidance; and connect you to local services and resources to help you with personal matters, study skills, or any problems you may face on campus. Please contact the student services for further details.

WORK INTEGRATED LEARNING (WIL) AND CAREER ADVISING

All courses at AIA require students to do work-related learning. We have an excellent industry advisory board who are willing to share their insights and advices regarding students' work-related learning experience. There are supportive academic and student services teams who will support students in finding the placement opportunities needed to complete the course. Please be aware that these courses require you to do significant amount of work-related learning to successfully complete your training and become qualified. If you have any concerns or barriers around completing placement, please reach out to your teachers, or the academic department or the student service team as soon as possible so they can assist.

Along with the Work-Integrated Learning Units at different levels throughout the programs, AIA's student support team elaborates with learning coordinating team to assist you in developing your employability skills and help you to find meaningful and sustainable employment. We can assist you with one-on-one career support based on your request.

STUDENT ENGAGEMENT AND RETENTION

The student support team is here to make your experience with us memorable and rewarding. During the year, you'll be treated to a number of free on-campus events, activities and talks where you'll get the opportunity to get to know, socialise with and learn from fellow students, education and industry experts.

All our events are posted on the student portal and we'll keep you updated through regular emails and eye catching on-campus updated screens. Make sure to check the student portal regularly.

LIBRARY AND LEARNING CENTRE

You can access the 24/7 e-Library and learning materials from AIA learning management system on your phone or computer.

WIRELESS INTERNET ACCESS

While on the AIA campus, you can use the AIA free Wi-Fi, be mindful of the using the Wi-Fi for appropriate activities as per the Information Management Security Policy and Procedures found [here](#).

PHOTOCOPYING AND PRINTING

Photocopying and printing facilities are available at the AIA campus. Please ask student service staff for assistance if needed.





STAY SAFE AND HEALTHY

MENTAL HEALTH

Your mental health is just as important as your physical health. Your mental health has a higher chance of affecting your studies if left unaddressed for too long. Feelings of despair and depression are common symptoms of culture shock and it is important to remember that these feelings are temporary. You'll find that getting social and engaging in regular exercise are great ways to cure your culture shock and keep your body happy and healthy. There is a list of Activity Centres on page 13 which may interest you.

There are free and confidential counselling services available to all students if you should need to discuss anything which may be affecting your studies privately.

GENERAL PRACTITIONERS

If you have a minor illness or ailment, you can visit a general practitioner (GP) for diagnosis, advice, referrals, and prescriptions. Don't forget to get a medical certificate from the doctor while you are there and send a copy to International Services so your absence will not affect your attendance.

SEXUAL HEALTH

Contraceptive medications and devices are easily obtained in Australia. Condoms can be bought from supermarkets and emergency contraceptives are available at most pharmacies. For more information, visit the [Melbourne Sexual Health Centre](#) or contact (03) 9341 6200.

SEXUAL HARASSMENT

Many students who experienced sexual assault or harassment avoid making formal complaints or reports as they did not feel their experiences were serious enough to warrant complaint. If you feel that you have been assaulted please call 000 / Student Services Officer / or counsellor. Your information will be confidential so don't be afraid to contact them if you are not too sure. Read AIA's Sexual Assault and Sexual Harassment Policy [here](#). For more information, please read:

<https://www.healthdirect.gov.au/sexualharassment>

SCAMS

Scams are dishonest, fraudulent and illegal schemes to make money, especially those that involve tricking people. Unfortunately, there are often scams targeting international students. We strongly advise that you approach transactions with caution during your stay in Australia. Visit the [Consumer Affairs Victoria website](#) for further information.

HOSPITALS

In an emergency, you should dial 000 for police, ambulance or fire brigade.

If you need to go to the hospital for non-emergency or elective surgery, call your OSHC provider and check that your policy will cover the cost. You may also need to check with your OSHC provider that you are using the nearest agreed hospital. Call the hospital and confirm that they accept patients with OSHC cards.

Please note OSHC does not usually cover private hospitals or specialist doctors. Please take some time to find the hospital nearest to where you are living now and write the details down below for easy reference.

AFTER HOURS SERVICES

For general medical advice you can call Nurse-OnCall on 1300 60 60 24 (24 hours). If you are unable to leave the house to visit the doctor you can contact the [Home Visiting Doctor](#) website or call 13 74 25, for after-hours medical care call (03) 9429 5477. This service is available evenings (every night), weekends and public holidays.

CARRYING MONEY

It is not advisable to carry large amounts of cash. Most transfers can be made via internet banking which will help you avoid carrying large amounts.

Tips:

- Only carry the amount necessary for your arrival
- Open a bank account upon arrival or prior to leaving your home country
- Avoid using Automatic Teller Machines (ATMs) in isolated or dark locations.
- Do not share your personal access number for your bank account

In the event of an emergency dial 000.

RACISM

Racism is most likely to occur at work or when students are seeking somewhere to live. If you are feeling scared, please contact the student services team immediately. If you are in an unsafe environment please call 000 and the police will attend.





THEFT AND PERSONAL SECURITY

While Australia is considered as a relatively safe country, you should always be cautious and protect your belongings and personal safety when you arrive in an unfamiliar environment. Crime such as pickpocketing and mugging are quite rare but may be more likely to occur late at night if travelling alone in certain areas of the city in unpopulated streets. You should always be vigilant about your personal security and possessions in public places and take sensible precautions.

Tips:

- Don't leave belongings unattended
- Avoid displaying your valuables
- Travel with friends when you take public transport late at night
- Let someone know where you are going and the time you will return

WATER SAFETY

Australia's stunning coastline has some of the best beaches in the world. It is important that you understand the risks and take precautions to avoid dangerous situations.

Tips:

- Read the safety signs before going into the water
- Always swim between the red and yellow flags
- Do not swim at closed beaches
- If you need help, stick your hand up, stay calm and call for help
- If you get caught in a rip (a very strong current), try to swim diagonally across it – don't try swimming against it
- Swim at beaches that are patrolled by lifeguards.
- Don't swim alone – swim with a friend

For more beach safety tips, visit Surf Lifesaving Australia website at <https://sls.com.au>

ROAD SAFETY

Statistics show that motor vehicle, pedestrian and cycling accidents are the highest cause of death in Australia for international visitors. Students should ensure that they are familiar with the rules regarding cycling and driving in Australia.

Cycling Tips:

- Always wear a bike helmet with the strap fastened securely
- Ride on the left hand side of the road
- Ride in single file
- Follow the road rules, including stop signs and traffic lights
- Ride at least one metre away from parked cars and be alert for opening car doors when riding past

Walking Tips:

- Stop, look, listen
- Use the footpath
- Use pedestrian crossings

Driving Tips:

- It is compulsory to wear your seat belt at all times
- Keep to the speed limits as indicated by the signs
- Never drive under the influence of drugs and alcohol
- It is illegal to be talking on your hand held mobile while driving



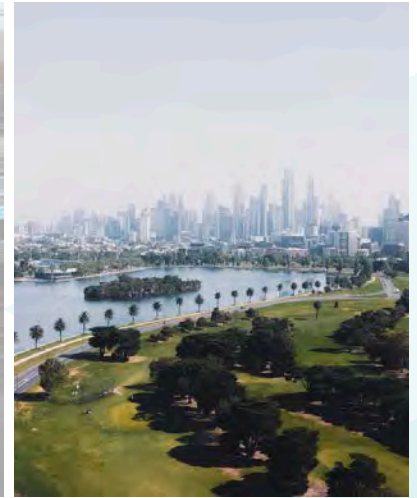




GETTING AROUND

OVERVIEW

Public transportation in Victoria is fairly affordable and convenient. The most common forms of transportation are trains, trams or buses. In order to ride on public transport, you will need a prepaid Myki card. Please note there is no paper ticket system in Melbourne, you must have a Myki card. Use the Myki card to "touch on" and "touch off" on the yellow card reader before and after each journey on public transport. You can top up your card online or at a top up kiosk (available at most train stations). We recommend that all students and visitors to use public transport as parking in CBD is usually limited.



PUBLIC TRANSPORT APPS

There are several public transport apps to help you navigate your journey:

- The PTV App has a built-in Journey Planner. Just type in where you are and where you are going to and the App will plan your journey for you.
- metroNotify® sends live updates and push notifications about train service delays to your device directly from Metro Train's control room.
- tramTRACKER® lets you know in real-time how far away your tram is from the station.

IN THE CITY

Located right in the heart of Melbourne CBD with pedagogy suited to curious and busy students, AIA encourages you, firstly, to be curious about the best things to do in city. Go explore and share with us how cool you are doing! These are helpful updates about places and events for those who want to know what's on in the city:

<https://whatson.melbourne.vic.gov.au/only-in-the-city>

There are several prayer rooms in and surrounding CBD area for those who find it important and helpful to know: Visit [Goprayer website](#)

OTHER INFORMATION

Below are some more useful links to maps and public transport available in your area:



Melbourne City Maps



Melbourne Airport Shuttle Bus



Melbourne Tram Network



ENTERTAINMENT & ACTIVITIES

CINEMAS

You can purchase discount movies tickets by presenting your Student ID card.

To find your nearest cinema please visit:

www.hoyts.com.au or

www.villagecinemas.com.au



PARKS AND GARDENS

In Melbourne, just a short walking distance from Fed Square, you'll find the Domain Parklands just off St Kilda Road. Four major parks and gardens make up the parklands; the Royal Botanic Gardens Melbourne, Kings Domain, Alexandra Gardens and Queen Victoria Gardens. You will also find the Shrine of Remembrance, a WWI memorial, in this area. It's a great place to spend a day exploring.

Australians value their local parklands and you will find many parks, gardens and reserves spread out through the Melbourne suburbs and greater Victoria region. Learn more at: www.parks.vic.gov.au

SPORTS



AUSTRALIAN FOOTBALL LEAGUE (AFL)

What?

The most popular sport in Australia is Australian Football League or "AFL." Victoria is home to ten national AFL teams.

When?

Winter

Where?

The games are commonly held at the MCG or Marvel Stadium

What?

"The Bushrangers" are the Victorian cricket team. Matches can last several days and a popular pastime is watching games on TV.

When?

Summer

Where?

The home of Victorian cricket is MCG in East Melbourne



CRICKET

What?

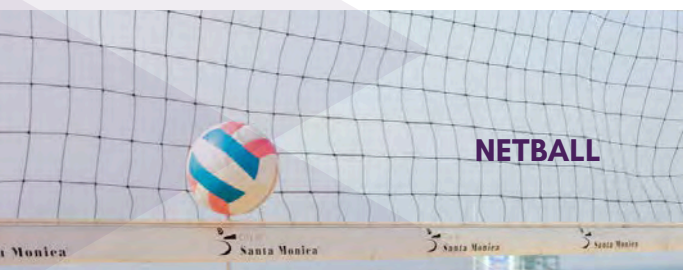
This is a popular sport among women. The "Melbourne Vixens" represent Victoria in national games. Netball can be played indoors or outdoors.

When?

Winter

Where?

Home games are played at Melbourne Arena



NETBALL

What?

The annual Australian Open is a major Grand Slam tournament. It attracts high-profile players from around the world.

When?

Summer

Where?

There are two primary courts: Rod Laver Arena and Melbourne Arena



TENNIS



ART GALLERIES AND MUSEUMS



NATIONAL ART GALLERY OF VICTORIA (NGV)

 180 St Kilda Rd, Melbourne

 Admission FREE!



IMMIGRATION MUSEUM

 400 Flinders St, Melbourne

 Admission FREE!

AUSTRALIAN CENTRE FOR CONTEMPORARY ART

 111 Sturt St, Southbank

 Admission FREE!



MELBOURNE MUSEUM

 11 Nicholson St, Carlton

 Admission FREE!



RETAIL CENTRES

Shopping is a popular pastime in Melbourne. It's a great way to escape the heat in summer (free airconditioning!) or pick up something special to remember your time in Australia. We recommend:

- Bourke Street Mall
- DFO South Wharf
- Melbourne Central & Emporium
- Chadstone Shopping Centre

FOR MORE INFORMATION, FOLLOW US!

Follow us on Facebook, Instagram for information about events & Opportunities of interest to international students

Let's get
SOCIAL



SCAN ME 😊

 Like

 Follow



EXPLORING

EUREKA SKYDECK

17 Riverside Quay, Southbank

LUNA PARK

18 Lower Esplanade, St Kilda

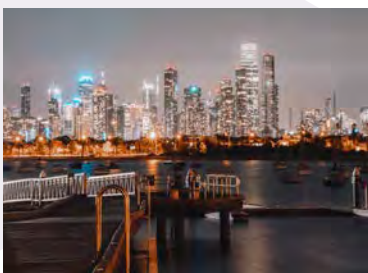
FEDERATION SQUARE

Opposite Flinders Street Station

MELBOURNE STREET ART

Some say the best of Melbourne can be found in its hidden alleys and laneways, and that is certainly true of Melbourne's street art scene. Pack your walking shoes and a camera, and get ready for a tour of Melbourne's public artwork. The best places to catch a glimpse of this unique subculture are Hosier Lane (op. Fed Square) and Union Lane (off Bourke St. Mall). Guide to Melbourne's Best Street Art is [here](#).

Some of the best beaches in the world are found in Australia. The waters of Port Phillip Bay are calm and quiet, making the beaches perfect for sunbathing and water sports. Further out of Melbourne you will find the waves are more intense (perfect for surfers!).



ST KILDA BEACH



BRIGHTON BEACH



TORQUAY



DAY TRIP

DANDENONG RANGES

This is a beautiful region 50Km east of Melbourne. You can easily waste a day here visiting the local cafes, wandering through the various gardens, or hiking the steep tracks. We recommend a visit to William Ricketts Sanctuary for beautiful outdoor sculptures surrounded by ancient redwood gumtrees. The National Rhododendron Gardens near Olinda are where you will find a wide variety of flowering plants; a great place for a picnic!

YARRA VALLEY WINE REGION

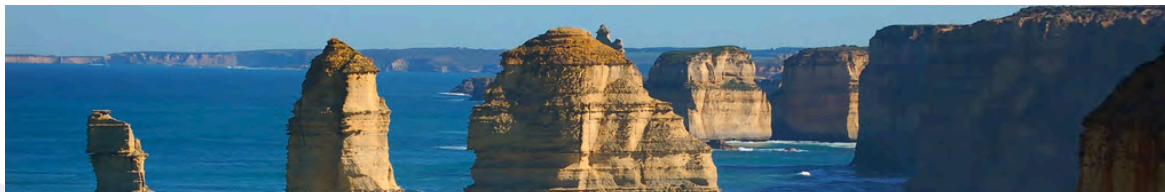
The Yarra Valley is a 1 hour drive east of Melbourne and is home to the best of Victoria's cool climate wine. You might like to try some of the local Pinot Noir, for which the region is famous. Chardonnay, Cabernet Sauvignon, Merlot and Shiraz are also grown here. A good idea is to join a wine tour so you can be bussed around without having to worry about driving.

WARRANDYTE

Warrandyte is a beautiful, leafy area set in Australian native bushland, 24Km northeast of Melbourne.

The Yarra River cuts a path through this picturesque suburb and offers some great swimming holes and picnic spots. It takes about 30 mins by car to reach Warrandyte.

WEEKEND TRIP



These beautiful mountainous ranges are a haven for hikers and rock climbers. It is also a wonderful place to go camping and enjoy Australia's picturesque eucalyptus forests. There are walks and hikes that cater to all ability levels. This national park is heritage listed for its beauty and Aboriginal rock art and there is plenty of wildlife. The best way to get there is by car; it's 235km from Melbourne CBD.

GRAMPIANS NATIONAL PARK

This area is famous for being home to one of very few volcanic hot springs in Australia. You can enjoy a soak in the mineral rich waters then continue on south to Phillip Island where you can check out some iconic Australian wildlife like wallabies, koalas and even Fairy Penguins! The beaches in this region also attract holiday goers and you'll notice many colourful "beach boxes" on the foreshore.

MORNINGTON PENINSULA

This is one of the most spectacular stretches of coastline in Australia. Here you will find the 12 Apostles, one of many series of rock formations standing in open water. The road is 243 km long and stretches between Torquay and Warrnambool. Highlights include Lorne and Apollo Bay for clean beaches and beautiful turquoise waters. If you are lucky, you might spot a pod of whales passing by!

GREAT OCEAN ROAD





USEFUL CONTACTS

AIA Contacts

Student Services	studentservices@analyticsinstitute.edu.au (+61 405 762 772)
Student Admissions	admissions@analyticsinstitute.edu.au
Academic Affairs	academics@analyticsinstitute.edu.au

Useful Contacts for Students

Campus Security	+61 405 762 772
Lifeline	131 114
Domestic Violence Helpline	1800 737 732
Suicide Helpline	1300 651 251
Kids Helpline (for those between the ages of 5 and 25)	1800 55 18 (www.kidshelpline.com.au)
Direct Line (24 hour drug and alcohol helpline)	1800 888 236
Beyond Blue (free counselling service)	1300 224 636 (www.beyondblue.com.au)

Other Useful Contacts

OSHC Assistance	www.health.gov.au
Police (non-urgent phone number)	+61 3 9247 6666 (www.police.vic.gov.au)
Department of Home Affairs (DoHA - Immigration)	131 881 (www.homeaffairs.gov.au)
Department of Foreign Affairs and Trade (for embassies)	1300 555 181 (www.dfat.gov.au)
Study Melbourne	www.studymelbourne.vic.gov.au
Study in Australia	www.studyinaustralia.gov.au
Melbourne Library Services	+61 3 9658 9500 (www.melbourne.vic.gov.au)



Analytics Institute
of Australia

ANALYTICSINSTITUTE.EDU.AU



marketing@analyticsinstitute.edu.au



+61 405 762 772



Part Level 10, 601 Bourke St, Melbourne



@analyticsiaustralia



ABN: 18 640 236 380 | CRICOS CODE: 04059D | TEQSA PROVIDER NUMBER PRV: 14346